



ROTO-PAC CONTAINER SYSTEM

MILLER EQUIPMENT CO.
HIGHWAY 22, GREENBROOK TOWNSHIP, NEW JERSEY
PHONE: PLYMOUTH 2-1838
MAIL ADDRESS: P. O. BOX 474
DUNELLEN, NEW JERSEY



A PRODUCT OF CITY TANK CORPORATION
SUBSIDIARY OF HAGAN INDUSTRIES, INC.
CORONA 68, NEW YORK

ROTO-PAC CONTAINER SYSTEM

THE RAPIDLY GROWING TREND to container systems is a fact of life confronting all concerned with the collection and disposal of rubbish, garbage and industrial wastes.

TODAY, a modern container system is a *necessity*. The public demands it. Health authorities urge it. Restaurants and food markets insist upon it. Communities with housing developments clamor for it. Fire prevention officials specify it.

THERE is no longer any question about installing a container system. The only question is "*Which container system is best?*"

There **IS** a difference in refuse removal container systems...

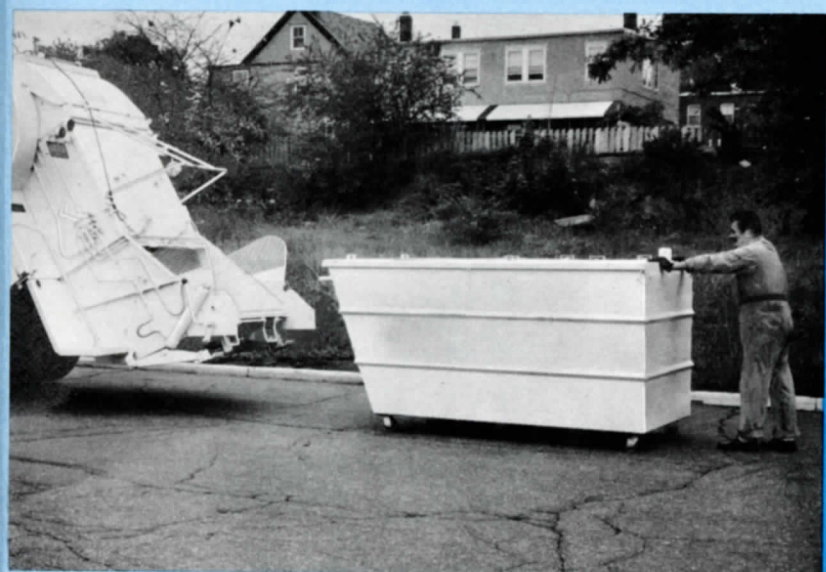
- ✓ **in ENGINEERING**— Roto-Pac is cable operated for dependability. Lifts and empties containers weighing up to 4 tons. (Also power-pulls full container to the Roto-Pac. Ends back-breaking, time-wasting hand-pushing.)
- ✓ **in CONSTRUCTION**— Heavy 12-gauge steel. All joints *welded* to stay leak-proof. Built to stand abuse, lasts for years. Precision-fit lids open in all directions for easy reception.
- ✓ **in OPERATION**— Continuous loading and compaction. No lost time as in batch loading. Dual-use, for manual and automatic loading from dock or street level on same route.
- ✓ **in ECONOMY**— Faster, continuous loading permits more pick-ups in less time. Fewer trips to dump or incinerator. Roto-Pac is the *only* rear-end loader that handles containers in sizes for every need, from ½ to 6 yds.
- ✓ **in CLEANLINESS**— Neater looking. Keeps odors confined. Dresses up premises. Can be painted to match any color scheme. Operator can pressure-spray clean with disinfectant.



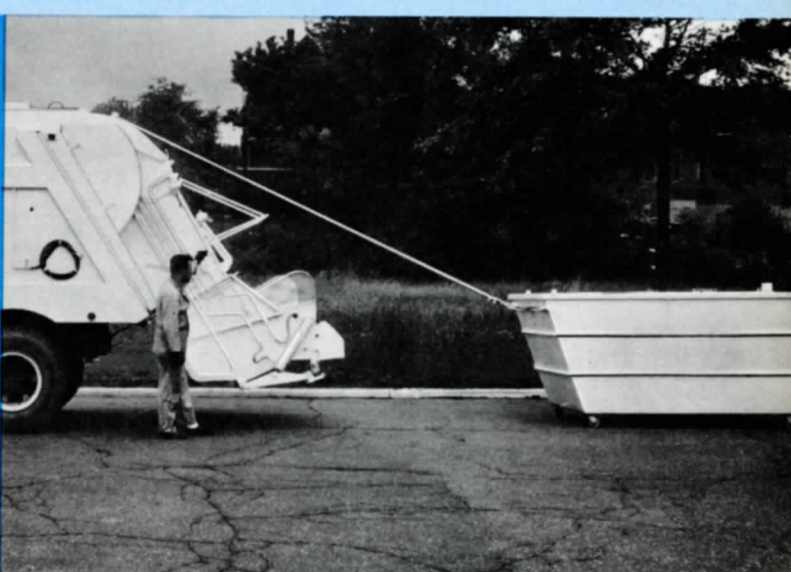
1 ROTO-PAC CONTAINER (in sizes $\frac{1}{2}$ to 6 cu. yds.) is world's most advanced container for storing all kinds of refuse, until automatically power-loaded into Roto-Pac Collection Unit (Send for special Roto-Pac brochure.)



2 Garbage and other rubbish are kept "socially acceptable" when deposited in convenient waist-high, hinged-lid Roto-Pac Container. Leak-proof and neat-looking.



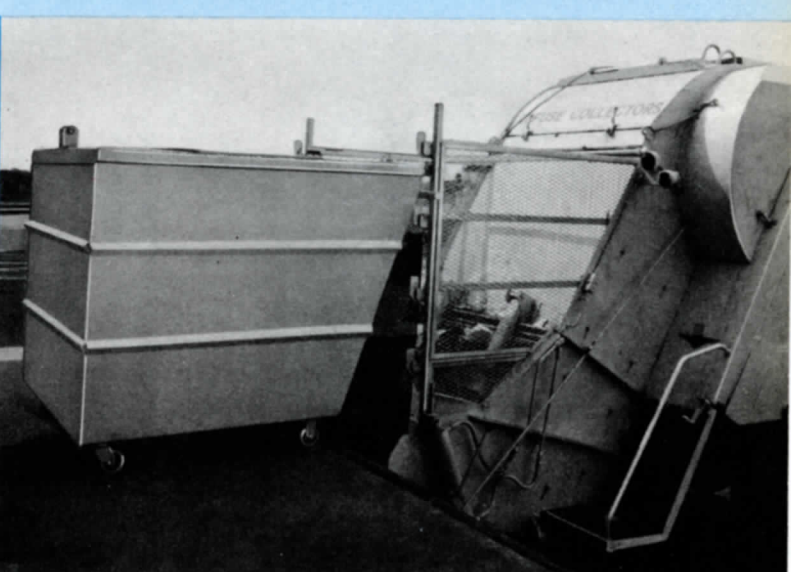
3 Roto-Pac Container is rolled to Roto-Pac and pull-up cable hooked on. (Lots easier than wrestling many garbage cans or drums!)



4 Heavily-loaded Roto-Pac Containers are easily pulled into position by cable.



5 Cable mechanism lifts, tilts and empties Roto-Pac Container in seconds. No piles of rubbish to clean up.



6 Roto-Pac Container works with equal ease from ground level, loading platform or dock—never leaves the premises. Disinfectant spraying service optional.

Yes, there IS a difference in container systems... in Engineering, Construction, Operation, Economy and Cleanliness!

PRIVATE SANITATION CONTRACTORS

are changing over to the Roto-Pac Container System because it enables them to handle any and all refuse collection problems. It *reduces operating costs*. It provides a powerful sales *approach* to attract new customers. It speeds up service because one neat, leak-proof Roto-Pac Container is easier for a man to handle than many messy garbage pails plus piles of unsightly rubbish. Every customer likes the way the Roto-Pac Container dresses up the premises, keeps odors confined, discourages vermin and scavenging animals, makes for better, more hygienic house-keeping.

**FLOOR AREA
OCCUPIED BY
ONE 5 YARD
CONTAINER**

**FLOOR AREA
OCCUPIED BY
TWENTY
55 GAL. DRUMS
(same content as
one 5 yd. container)**

**SAVES OVER
50% IN SPACE**

INDUSTRIAL AND COMMERCIAL FIRMS

The Roto-Pac Container (instead of many exposed drums) eliminates fire hazard, keeps shops, stores, supermarkets, buildings neater, speeds pick-ups. Sizes from 1/2 to 6 yards. Accepts all sorts of rubbish, refuse and garbage . . . keeps it "socially acceptable" until collected. Occupies less than half the floor space of many garbage cans or drums totalling the same capacity.

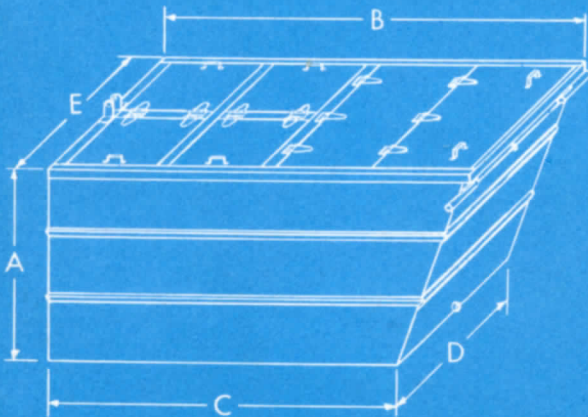
MUNICIPALITIES

Civic pride and hygienic considerations highlight the growing trend to the Roto-Pac Container System of refuse collection. It is vastly more sanitary than garbage pails and rubbish piles. Especially useful in housing projects, parks, playgrounds, hospitals, schools and other municipal buildings.



**ALL THIS
UNSIGHTLY MESS REPLACED
BY ONE **ROTO-PAC** CONTAINER!**

TECHNICAL DATA



CAPACITY	DIMENSIONS				
	A	B	C	D	E
1/2 YD.	29	37	24	28	30
1 YD.	38	56	37	28	30
2 YD.	38	84	65	34	36
3 YD.	49	66	48	51	55
4 YD.	49	84	67	51	55
5 YD.	49	103	85	51	55
6 YD.	55	109	91	51	55